

B&B Molders LLC



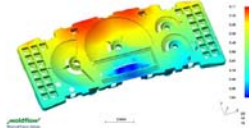
Custom Plastic Injection Molding & Tooling

Engineering Services

Part Design & Product Development
AutoDesk Inventor 2011
2-D Part Drawings (.DWG, .DXF, .PDF)
3-D Modeling (.IGES, .STEP, .STL, .SAT)
2-D & 3-D Tooling Designs

Moldflow Analysis Capabilities

- Autodesk Moldflow Adviser 2010



Rapid Prototyping

- SLA (Stereolithography)
- SLS (Selective Laser Sintering)
- Silicone Mold & Cast Urethane Parts
- Machined

On-Site Engineering Testing Lab

Production Equipment & Capabilities

51,900 ft² Manufacturing Area

Moldflow Process & Production Monitoring

- Shotscope Process Control
 - MPX Process Optimization
- Scientific Process Development

15 Plastic Injection Molding Machines

- (2) Toyo 400 Ton
- (1) Nissei 510 Ton Electric
- (2) Cincinnati 220 Ton
- (3) Toyo 200 Ton
- (1) Nissei 198 Ton Electric
- (1) Cincinnati 165 Ton
- (2) Toyo 150 Ton
- (1) Toyo 110 Ton
- (1) Toyo 90 Ton
- (1) Cincinnati 55 Ton



Automated Material Drying & Handling System

Material Color Mixing

Secondary Operations

Pad Printing (Printex G2-150)
Sonic Welding (Herrmann Dual-Force HS Dialog)
Light Assembly

Materials

ABS
Acetal
Acrylic
Filled Materials
Nylon
PC/ABS
Polycarbonate
Polypropylene
Polystyrene



QA Department

ISO 9001:2000 Certified

Cage Code: 4MWV8

D.O.S.#: M20519

Capability Studies

PPAP Submissions

Layout Equipment

- (2) Brown & Sharp CMM's
 - Reflex Manual
 - Global Advantage Programmable (PC-DMIS CAD++ Software)
- Micro-Vu Measuring System
- X-Rite (SD60) Spectrophotometer

On-Site Tool Room

Formal Mold Maintenance Program
Mastercam X2 CAM Software
HAAS VF2 CNC Vertical Milling Machine
Makino SP43 Wire EDM
(2) AGIE CNC/EDM Sinkers
(4) Bridgeport Vertical Milling Machines
(6) Surface Grinders
(1) Lathe
5 Ton Jib Crane



58471 Fir Road South, Mishawaka, IN 46544

574.259.7838 ph. 574.259.7939 fax

www.bandbmolders.com