

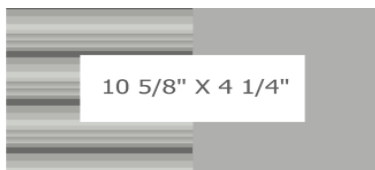
# ENDURA RANGE VENT Installation Instructions



**CAUTION:** Improper installation will result in poor product performance.

- Do not over tighten screws during installation!! Over tightening will cause part distortion and product will not function properly!!
- Bottom clips must be fully engaged or hood will blow off during transit.
- Excessive force on locking tabs may cause breakage, especially in extremely cold conditions.
- Failure to follow these instructions for installation of our product will forfeit any warranty consideration.

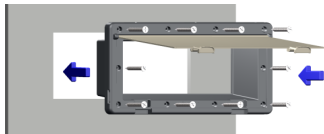
1. Frame or cut out a 10 5/8" x 4 1/4" opening into sidewall.



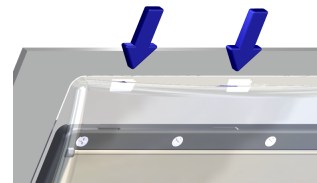
2. Apply appropriate putty tape or gasket to back of ENDURA base (B&B p/n [501-014-00004](#) ).



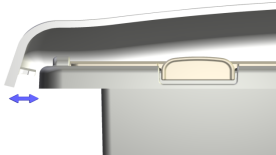
3. Position ENDURA base into cut-out opening. Open damper and secure to sidewall with (10) #8 self tapping screws. Install bottom screws first, followed by middle and finish with top. Snap closed when completed.



4. Place ENDURA cover (B&B p/n [201-014-00010](#) ) over top of base and slide the three top alignment tabs into the receiver slots in top of base.



5. Flex out bottom corners of ENDURA cover and align the side locking tabs with corresponding slots on bottom edge of base. Snap locking tabs into base. *Fit is designed to be tight.*



6. Lastly, cap seal edges with caulk for waterproofing.

