



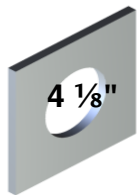
Installation Instructions



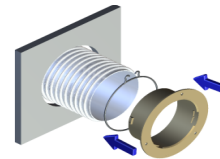
CAUTION: Improper installation will result in poor performance.

- Over-tightening of the screws and/or not having a flush surface to secure the flange will result in damage to the ThermoVent and will affect the performance.
- Screws larger than #8 pan head will cause interference.
- Failure to follow these instructions for installation of our product will forfeit any warranty consideration.

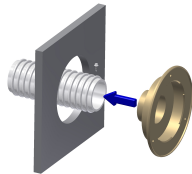
1. Drill a 4 1/8" hole into desired material. (B&B Molders recommends using "Lenox Hole Saw #3006666L.")



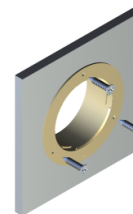
- 2a. For the 4" ThermoVent (B&B p/n 691), pull flexible ducting through the 4 1/8" hole and slide over ThermoVent base. Make sure the flexible ducting covers the tabs on the back of the base and secure with snap ring.



- 2b. For the 2" ThermoVent (B&B p/n 692), pull flexible ducting through the 4 1/8" hole and slide over Thermovent base. Secure the flexible hose onto the base using a 1/2" or 5/8" long, self-tapping screw.

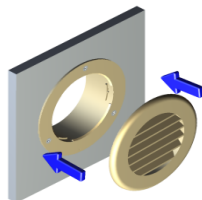


3. Slide ThermoVent base with flexible hose attached into hole and screw base into place using (3) #8 screws.



DO NOT OVERTIGHTEN!

4. Vacuum debris away from hole and out of ductwork.
5. Snap ThermoVent grill (B&B p/n 690) onto ThermoVent base and rotate.



Optional Damper Assembly:

Align dampers with raised posts facing opposite directions. Place in receiver slots as illustrated.

