



REPAIR INSTRUCTIONS



www.bandbmolders.com

58471 Fir Road
Mishawaka, IN 46544
Phone: 574-259-7838
Fax: 574-259-7939



REPAIR INSTRUCTIONS

CAUTION:

The Nautilus Panel System is designed for compartment use only and should not be used on any exterior application where continuous exposure to external elements exists.

Part #301-033-00001 – polar white

Part #301-033-00002 - black



58471 Fir Road, Mishawaka, IN 46544
Phone: (574) 259-7838 Fax: (574) 259-7939
www.bandbmolders.com



REPAIR INSTRUCTIONS

PUMP SWITCH

(B&B PN 104-005-00005 & 104-005-00010)

1. Remove (8) perimeter screws on flange of Nautilus panel to gain access to back side.



2. Disconnect power from back of pump switch.



3. On back of switch, compress locking fingers on top. Push top side of switch through panel.



4. On back of switch, compress locking fingers on bottom. Push bottom side of switch through panel.



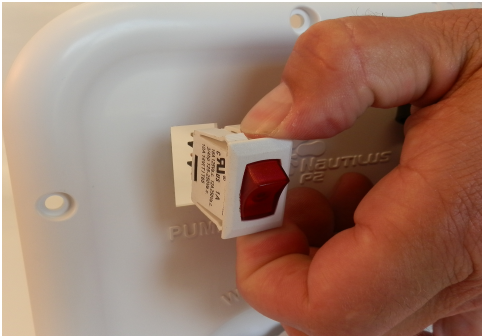


REPAIR INSTRUCTIONS

PUMP SWITCH

(B&B PN 104-005-00005 & 104-005-00010)

5. Remove switch.



6. Insert new switch in panel.



7. Connect power to new pump switch.



- 8. Test pump switch and make sure it lights up when pump is in on position.
- 9. Reinstall Nautilus panel in convenience center and secure with (8) screws.





REPAIR INSTRUCTIONS

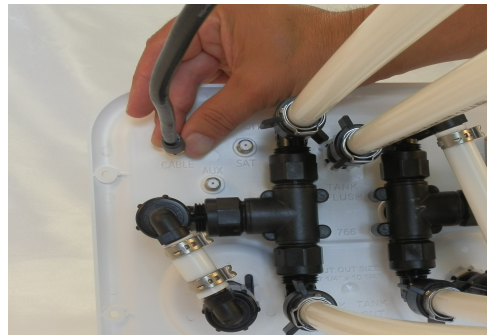
COAX CONNECTOR

(B&B PN COAX CONNECTOR)

1. Remove (8) perimeter screws on flange of Nautilus panel to gain access to back side.



2. Remove coax line attached to connector you wish to replace.



3. From front side of panel, use a pair of pliers to firmly grasp coax connector.



4. Wiggle connector back and forth while pulling to remove. Some unnecessary force may be required.

5. Press new connector into vacated hole with your thumb.

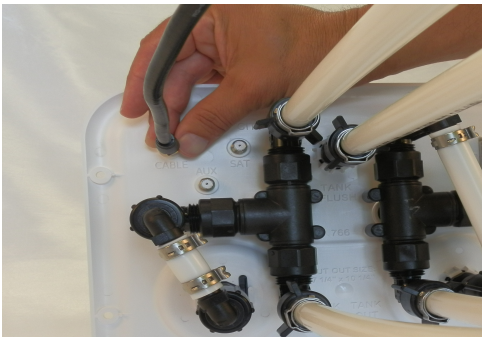




REPAIR INSTRUCTIONS

COAX CONNECTOR (B&B PN COAX CONNECTOR)

6. Reconnect coax line to back side of coax connector.



7. Reinstall Nautilus panel in convenience center and secure with (8) screws.





REPAIR INSTRUCTIONS

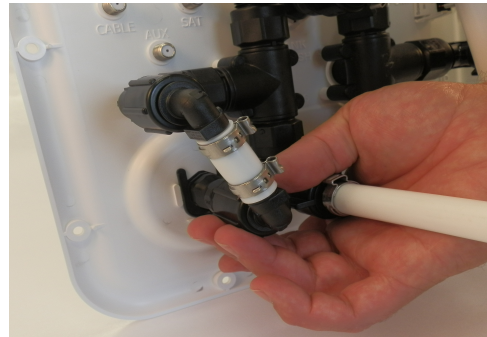
CITY WATER CONNECTION INLET

(B&B PN 301-004-00012)

1. Remove (8) perimeter screws on flange of Nautilus panel to gain access to back side.



2. Unscrew plumbing line connected to back of **"WATER INLET."**



3. Move plumbing line away from **"WATER INLET."**



4. On back panel, insert thin flat head screwdriver under retainer clip securing **"WATER INLET."**





REPAIR INSTRUCTIONS

CITY WATER CONNECTION INLET

(B&B PN 301-004-00012)

5. Using screwdriver, lift retainer clip up.



6. Remove retainer clip.



7. From front side of panel, pull **"WATER INLET"** out of panel.



8. Remove and save dust cover on **"WATER INLET."** You will reuse it.





REPAIR INSTRUCTIONS

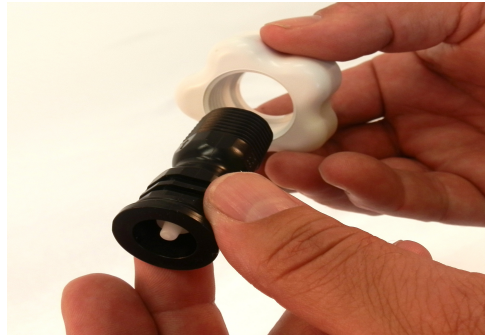
CITY WATER CONNECTION INLET

(B&B PN 301-004-00012)

9. Remove and save coupler on **"WATER INLET."**
You will reuse it.



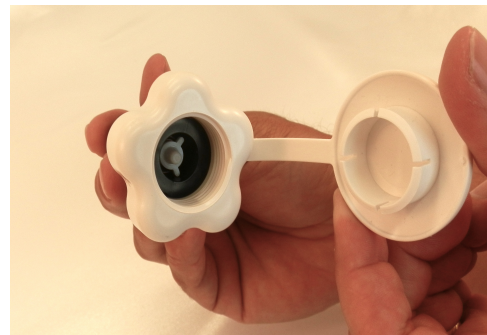
10. Insert new check valve into coupler.



11. Assemble dust cover around check valve and back side of coupler.



12. Dust cover should snap into front side of coupler without twisting dust cover strap.





REPAIR INSTRUCTIONS

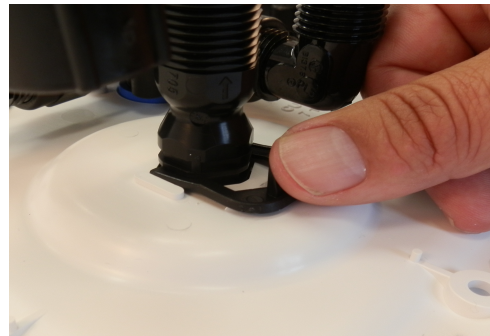
CITY WATER CONNECTION INLET

(B&B PN 301-004-00012)

13. From front side of panel, insert newly assembled **"WATER INLET"** into vacated hole.

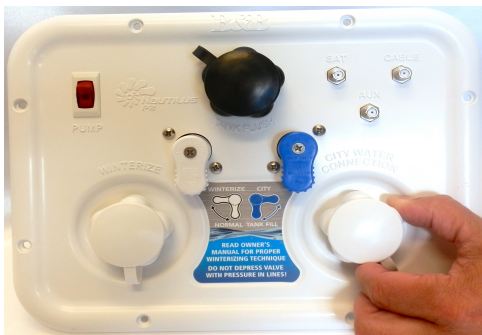


14. While holding inlet body in place, slide retainer clip into 2nd line of grooves on inlet body.



Note: Retainer clip will make a clicking sound when it locks into place

15. Check to make sure coupler easily turns around check valve and dust cover.



16. Screw plumbing line onto **"WATER INLET."** Hand-tighten + ¼ turn.



*Do not over-tighten as it may result in stress cracking.





REPAIR INSTRUCTIONS

CITY WATER CONNECTION INLET

(B&B PN 301-004-00012)

17. Test system to make sure plumbing connections are free of leaks.
18. Reinstall Nautilus panel in convenience center and secure with (8) screws.



58471 Fir Road, Mishawaka, IN 46544
Phone: (574) 259-7838 Fax: (574) 259-7939
www.bandbmolders.com



REPAIR INSTRUCTIONS

SINGLE DIVERTER VALVE - WHITE HANDLE

(B&B PN 501-008-00008)

1. Remove (8) perimeter screws on flange of Nautilus panel to gain access to back side.



2. On back side of panel, unscrew plumbing line connected to diverter valve end labeled **"FROM WINTER."**



3. On back side of panel, unscrew plumbing line connected to diverter valve end labeled **"TO PUMP."**



4. On back side of panel, unscrew plumbing line connected to diverter valve end labeled **"TANK OUT."**





REPAIR INSTRUCTIONS

SINGLE DIVERTER VALVE - WHITE HANDLE

(B&B PN 501-008-00008)

5. On front side of panel, remove phillips-head screw in center of white colored handle.



IMPORTANT!

Save the screw, you will need to use it on replacement valve.

6. Remove white handle.



IMPORTANT!

Save the handle, you will need to use it on replacement valve.

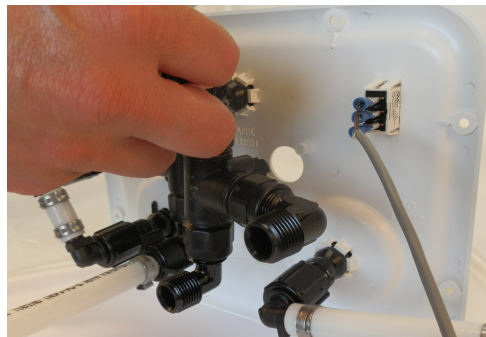
7. On front side of panel, remove (2) phillips-head screws that hold diverter valve in place.



IMPORTANT!

Save the screws, you will need to use them on replacement valve.

8. Diverter valve can now be separated from panel.



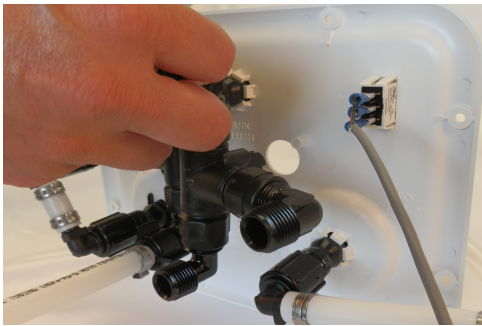


REPAIR INSTRUCTIONS

SINGLE DIVERTER VALVE – WHITE HANDLE

(B&B PN 501-008-00008)

9. Insert new diverter valve in location vacated by old diverter valve.



IMPORTANT!

To ensure diverter valve will work as intended, handle orientation is critical when any valve is replaced.

10. Secure in place with (2) phillips-head screws.



*Do not over tighten as it may result in stress cracking.

11. Place white colored handle on valve stem so it is facing down.



- 11a. Handle will turn clockwise to left facing position if installed correctly.

- 11b. If handle does not turn clockwise, remove handle & reinstall it in left facing position. Handle should rotate counterclockwise to down position.
11c. Once proper rotation is established, secure white handle with phillips-head screw.



* Do not over-tighten as it may result in stress cracking.



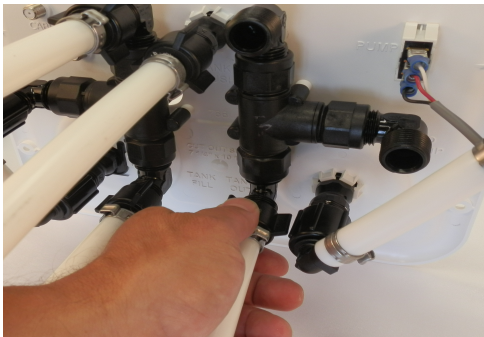


REPAIR INSTRUCTIONS

SINGLE DIVERTER VALVE - WHITE HANDLE

(B&B PN 501-008-00008)

12. Screw **(Fresh Tank Out)** plumbing line onto diverter valve end labeled **"TANK OUT."** Hand tighten + ¼ turn.



*Do not over tighten as it may result in stress cracking.

13. Screw **(Pump In)** plumbing line onto diverter valve end labeled **"TO PUMP."** Hand tighten + ¼ turn



* Do not over tighten as it may result in stress cracking.

14. Screw plumbing line from **"WINTERIZE"** inlet onto diverter valve end labeled **"FROM WINTER."** Hand tighten + ¼ turn.



*Do not over tighten as it may result in stress cracking.

15. Test system to make sure plumbing connections are free of leaks.
16. Reinstall Nautilus panel in convenience center and secure with (8) screws.





REPAIR INSTRUCTIONS

SINGLE DIVERTER VALVE - BLUE HANDLE

(B&B PN 501-008-00008)

1. Remove (8) perimeter screws on flange of Nautilus panel to gain access to back side.



2. On back side of panel, unscrew plumbing line connected to diverter valve end labeled "TANK FILL."



3. On back side of panel, unscrew plumbing line connected to diverter valve end labeled "CITY."



4. On back side of panel, unscrew plumbing line connected to diverter valve end labeled "FROM WATER."



58471 Fir Road, Mishawaka, IN 46544
Phone: (574) 259-7838 Fax: (574) 259-7939
www.bandbmolders.com



REPAIR INSTRUCTIONS

SINGLE DIVERTER VALVE - BLUE HANDLE

(B&B PN 501-008-00008)

5. On front side of panel, remove phillips-head screw in center of blue colored handle.



IMPORTANT!
Save the screw, you will need to use it on replacement valve.

6. Remove blue handle.



IMPORTANT!
Save the handle, you will need to use it on replacement valve.

7. On front side of panel, remove (2) phillips-head screws that hold diverter valve in place.



IMPORTANT!
Save the screws, you will need to use them on replacement valve.

8. Diverter valve can now be separated from panel.





REPAIR INSTRUCTIONS

SINGLE DIVERTER VALVE - BLUE HANDLE

(B&B PN 501-008-00008)

9. Insert new diverter valve in location vacated by old diverter valve.



IMPORTANT!

To ensure diverter valve will work as intended, handle orientation is critical when any valve is replaced.

10. Secure in place with (2) phillips-head screws.



*Do not over tighten as it may result in stress cracking.

11. Place blue colored handle on valve stem so it is facing down.



- 11a. Handle will turn counterclockwise to right facing position if installed correctly.

- 11b. If handle does not turn counterclockwise, remove handle & reinstall it in right facing position. Handle should rotate clockwise to down position.
11c. Once proper rotation is established, secure blue handle with phillips-head screw



*Do not over-tighten as it may result in stress cracking.





REPAIR INSTRUCTIONS

SINGLE DIVERTER VALVE - BLUE HANDLE

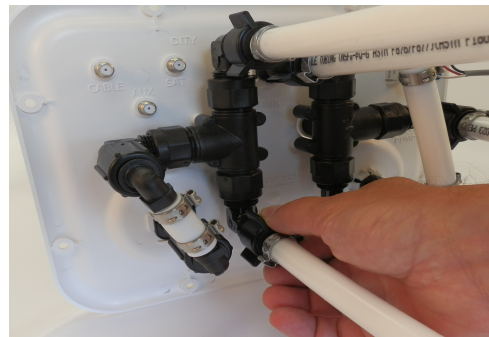
(B&B PN 501-008-00008)

12. Screw **(Cold Water Supply)** plumbing line onto diverter valve end labeled **"CITY."** Hand tighten + ¼ turn.



*Do not over tighten as it may result in stress cracking.

13. Screw **(Fresh Tank In)** plumbing line tank onto diverter valve end labeled **"TANK FILL."** Hand tighten + ¼ turn.



*Do not over tighten as it may result in stress cracking.

14. Screw plumbing line from **"WATER INLET"** onto remaining open diverter valve end labeled **"FROM WATER."** Hand tighten + ¼ turn.



*Do not over tighten as it may result in stress cracking.

15. Test system to make sure plumbing connections are free of leaks.
16. Reinstall Nautilus panel in convenience center and secure with (8) screws.

