



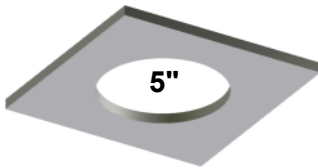
Installation Instructions



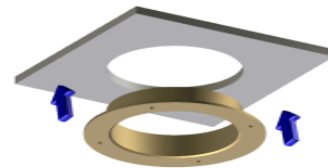
CAUTION: Improper installation will result in poor performance.

- Over-tightening of the screws and/or not having a flush surface to secure the flange will result in damage to the CoolVent and will affect the performance.
- Screws larger than #8 Pan Head will cause interference.
- Failure to follow these instructions for installation of our product will forfeit any warranty consideration.

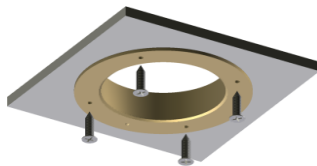
1. Drill a 5" hole into ceiling material.
(Lenox Hole Saw #30076 76L recommended)



2. Place CoolVent base (B&B p/n 693) into opening.



3. Secure with (4) #8 screws. **DO NOT OVERTIGHTEN!**
4. Vacuum debris away from hole and out of ductwork.



5. Snap CoolVent cover (B&B p/n 695 or ACG Damper) onto CoolVent base (693) and rotate.

