

# EZ SWIVEL KIT

## Installation Instructions

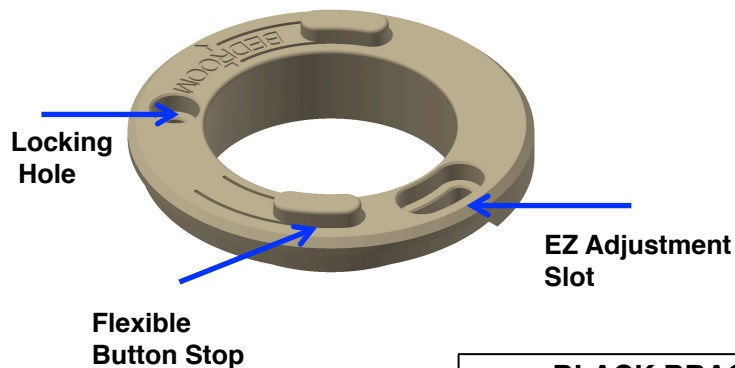


### CAUTION:

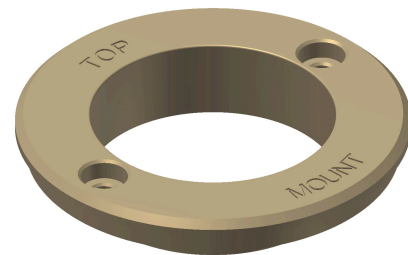
- Improper installation, operation or servicing may result in equipment damage or personal injury.
- Failure to follow these instructions for installation of our product will forfeit any warranty consideration.

### Items Included in the EZ Swivel Kit (Part #301-030-00001)

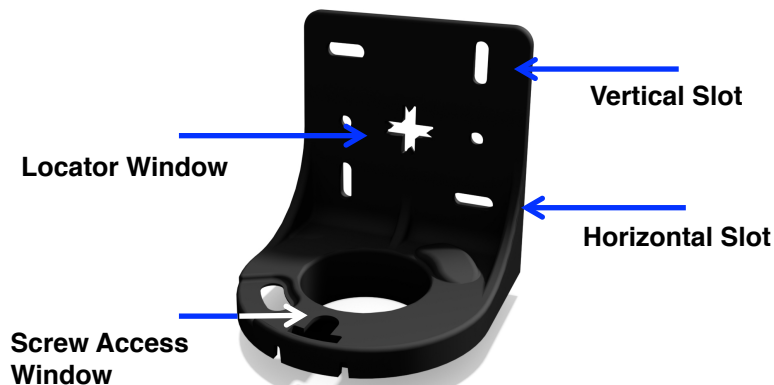
#### BOTTOM TAN BUSHING (Part #201-030-00004)



#### TOP MOUNT TAN BUSHING (Part #201-030-00003)



#### BLACK BRACKET (Part #201-030-00002)



58471 Fir Road, Mishawaka, IN 46544  
Phone: (574) 259-7838 Fax: (574)  
259-7939

[www.bandbmolders.com](http://www.bandbmolders.com)

# EZ SWIVEL KIT

## Installation Instructions

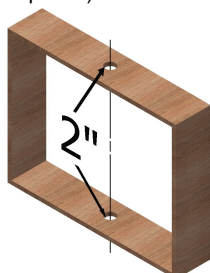


### CAUTION:

- Improper installation, operation or servicing may result in equipment damage or personal injury.
- Failure to follow these instructions for installation of our product will forfeit any warranty consideration.

## Mounting of the Tan Bushings

1. Cut 2" hole in centered length location on bottom & top of framed cabinet opening.  
(Front to back hole location dependent on thickness of substrate and panel.)

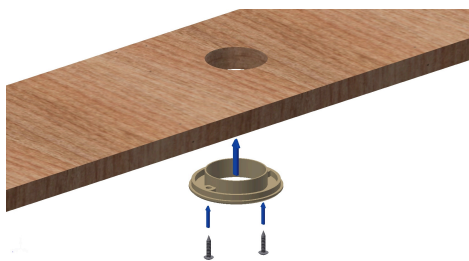


*\*Top & bottom must be properly aligned for swivel brackets to work as designed.*

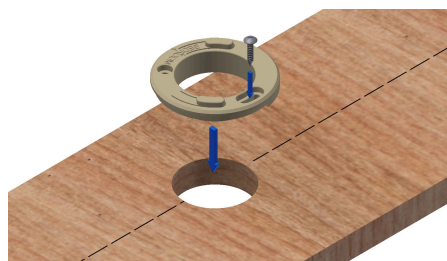
3. Insert **tan bushing** with "flexible button stops" in the 2" hole at bottom of cabinet.  
(Make sure side marked "Bedroom" is facing bedroom of your unit.)



2. Insert **tan bushing** labeled "Top Mount" in 2" hole at top of cabinet. Secure with (2) #8 screws, minimum 1 1/4" long.  
(Orientation not necessary)



4. Install (1) #8 screw, minimum 1 1/4" long in center of *EZ Adjustment Slot*. (Do not install second screw at this time. It will be installed at step 14 when properly aligned.)



58471 Fir Road, Mishawaka, IN 46544  
Phone: (574) 259-7838 Fax: (574)  
259-7939

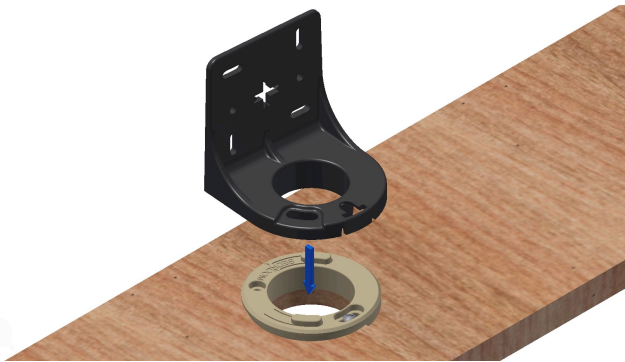
[www.bandbmolders.com](http://www.bandbmolders.com)

# EZ SWIVEL KIT

## Installation Instructions – cont.

### Mounting of the Tan Bushings – cont.

5. Install (1) **EZ Swivel Bracket** onto bottom **bushing** with flexible stop buttons.

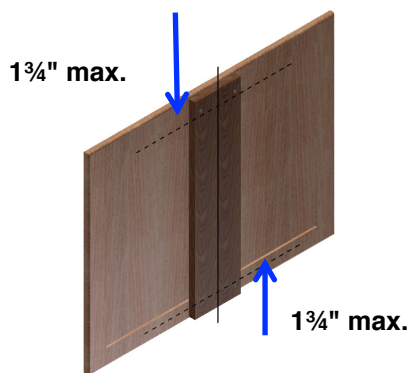


- Align *Screw Access Window* on **EZ Swivel Bracket** with the *EZ Adjustment Slot* on bushing
- Push down firmly on **EZ Swivel Bracket** until it snaps into place, securing it.
- Make sure bottom **EZ Swivel Bracket** swivels in desired direction and locks in desired position.

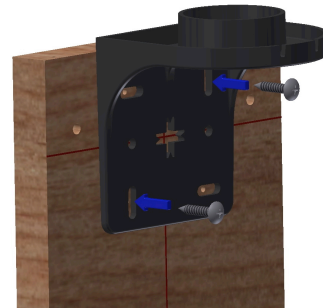
### Mounting the Black Swivel Bracket to the TV Support Panel

The location where the **EZ Swivel Brackets** attach to TV mounting substrate will vary depending on the length of the TV substrate and the opening of the cabinet frame.

6. On substrate that TV will be mounted, place a mark, centered and no more than 1 $\frac{3}{4}$ " up from edge of bottom and top.



7. With (1) **EZ Swivel Bracket**, align *Locator Window* with top centered mark on TV mounting substrate. Install (1) screw in each vertical slot. (#8 or #10 screws, 1 $\frac{1}{4}$ " long recommended)



58471 Fir Road, Mishawaka, IN 46544  
Phone: (574) 259-7838 Fax: (574)  
259-7939

[www.bandbmolders.com](http://www.bandbmolders.com)

# EZ SWIVEL KIT

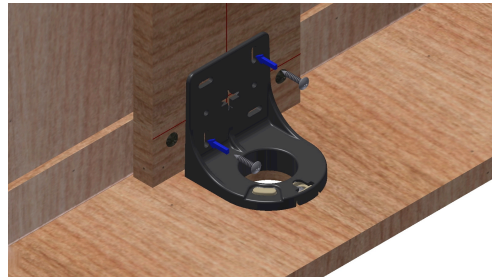
## Installation Instructions – cont.

### Mounting the Black Swivel Bracket to the TV Support Panel – cont.

8. Insert **EZ Swivel Bracket** installed in step 7 into **tan bushing** at top of cabinet. Snap into place to secure.



10. To attach bottom **EZ Swivel Bracket** align bracket *Locator Window* with centered mark on TV mounting substrate. Secure with (4) screws.



(#8 or #10 screws, 1¼" long recommended)

9. On bottom of TV cabinet opening, place spacers approximately 2" from each end.



¼" - ⅜" spacers should give adequate clearance for panel to swivel when finished.



58471 Fir Road, Mishawaka, IN 46544  
Phone: (574) 259-7838 Fax: (574)  
259-7939

[www.bandbmolders.com](http://www.bandbmolders.com)

# EZ SWIVEL KIT

## Installation Instructions – cont.

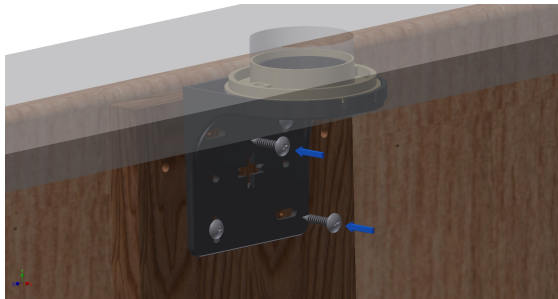
### Checking for Proper installation

11. Rotate installed TV panel, verifying it swivels and locks in desired direction and position.

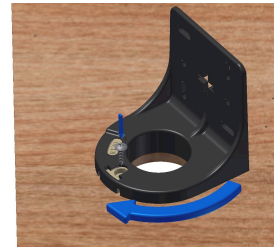
12. **Important!** To eliminate any vertical play, loosen (2) screws on top **EZ Swivel Bracket** and adjust bracket up. Retighten screws to secure.



13. Install (1) screw in each horizontal slot of top **EZ Swivel Bracket**.



14. To finish installation, make sure TV substrate panel locks in desired position then rotate the fully assembled TV panel until the *Screw Access Window* aligns with the *Locking Hole* on bottom **tan bushing**. Install (1) #8 screw, minimum 1 1/4" long.



### Adding an Additional Locking Pin To your Swivel TV Cabinet

15. The EZ Swivel Bracket's design creates a locking point near the center of the TV. If the cabinet is designed for TV's 32" & larger, we recommend installing an additional locking pin near the end of your swivel panel for use during travel to minimize an movement.



58471 Fir Road, Mishawaka, IN 46544  
Phone: (574) 259-7838 Fax: (574)  
259-7939

[www.bandbmolders.com](http://www.bandbmolders.com)

# EZ SWIVEL KIT

## Installation Instructions

### Adjusting Fully Assembled Swivel TV Cabinet

16. If horizontal adjustments are needed due to uneven gaps on side of cabinet:
  - a. On both **EZ Swivel Brackets**, remove screws in all vertical slots (four screws total).
  - b. Loosen screws in all all horizontal slots and adjust as needed (four screws total).
  - c. Retighten all screws in horizontal slots.
  - d. Install and tighten all screws in vertical slots.
17. If swivel TV cabinet does not rotate in desired direction or does not lock in desired position:
  - a. Remove screw in *Locking Hole* from bottom **tan bushing** installed in step 16.
  - b. Rotate the **EZ Swivel** to lock position. (Screw installed in *EZ Adjustment Slot* should be accessible now.)
  - c. Loosen screw in *EZ Adjustment Slot*.
  - d. Rotate bottom **tan bushing** to correct position.
  - e. Tighten screw in *EZ Adjustment Slot* on bottom **tan bushing** to secure.
  - f. Repeat step 16 to lock the bottom **tan bushing** in place.



58471 Fir Road, Mishawaka, IN 46544  
Phone: (574) 259-7838 Fax: (574)  
259-7939

[www.bandbmolders.com](http://www.bandbmolders.com)