



City Water Plate

Installation Instructions

Caution: Improper installation, operation, or servicing will result in equipment damage and personal injury. This product should be installed and serviced by qualified technical personnel who are familiar with the construction, "operation", & potential hazards of this type of connection.

Over tightening mounting screws may cause product to distort.

All plumbing connections made during installation should be hand tight plus 1/4 turn.

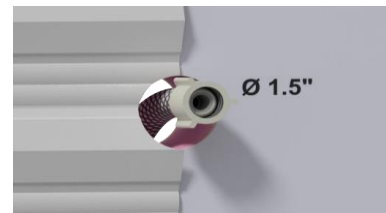
Over tightening any plumbing connections will result in leaking and product damage.

Plumbing connections installed in a "binding" condition create excessive stress on product which may result in leakage or damage.

Never push check valve on city water inlet down to relieve pressure. O-ring failure will result.

Failure to follow these instructions for installation of our product will forfeit any warranty consideration.

1. Cut a 1 1/2" diameter hole in sidewall & feed plumbing connection through opening.



2. Apply appropriate putty tape or foam gasket to back of dish / flange. Make sure mounting holes are covered

WHEN USING GASKETS BEHIND THIS PRODUCT, KEEP UNIFORM THICKNESS AROUND PERIMETER!!

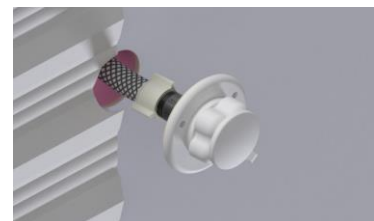


3. Using 100% silicone caulk, apply behind check valve to ensure waterproofing.



4. Connect plumbing line for the city water connection to back of threaded city water inlet.

PLUMBING CONNECTIONS SHOULD BE HAND TIGHT PLUS 1/4 TURN.



5. Position flange into cutout opening on sidewall & secure with (3) #8 self-tapping screws.

*DO NOT OVERTIGHTEN SCREWS DURING INSTALLATION!!
OVERTIGHTENING WILL CAUSE PART DISTORTION*



6. Cap seal outside perimeter with caulk for waterproofing.



IMPORTANT! :

to test plumbing lines through B&B city water connections per RVIA standard Section 7.7.2, we strongly recommend using B&B's Test Plug & Washer. (B&B Part # 301-028-00001) Using anything other than the B&B Test Plug could void any warranty consideration. When testing is complete, residual line pressure **must** be relieved by opening a faucet or low point drain. The backflow preventer on the city water connection is designed for directional flow. Any pressure in reverse direction will cause the o-ring to be blown off its seat, compromising proper function of the product. Do not remove or open any ball valve on your testing apparatus until line pressure is



www.bandbmolders.com

58471 Fir Road South, Mishawaka, IN 46544

Ph. (574) 259-7838 Fax: (574) 259-7939